

Organisms you may find on the discs: Annelida

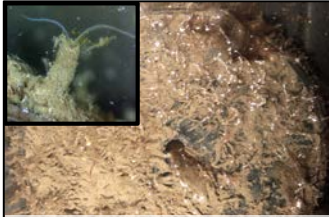
Class Polychaeta

The polychaetes which settle on the plates usually build tubes and are thus sessile or semi-sessile. Their tentacles can be seen extending out of their tubes and are used for filtering food from the water. Other polychaetes on the discs are errant and are omnivores.

Learn more about Polychaetes



Common name: Bristleworm



Polydora ciliata

Learn more about *Polydora ciliata*



Common name: Whip Mudworm



Polydora cornuta

Learn more about *Polydora cornuta*



Common name: Sinistral spiral tubeworm



Spirorbis spirorbis

Learn more about *Spirorbis spirorbis*



Common name: Ragworm



Hediste diversicolor

Learn more about *Hediste diversicolor*



Organisms you may find on the discs: Bryozoans

Class Gymnolaemata

The colonies of moss animals growing on the discs form mats. They grow directly on the substratum but also on the shells of mussels. These compete for space with barnacles, growing over and smothering them. They are filter-feeders.

Learn more about Bryozoans



Common name: Moss animals, sea mats



Electra pilosa

Learn more about *Electra pilosa*



Common name: Tube-dwelling bryozoan



Common name: Moss animals, sea mats



Electra sp.

Common name: Moss animals, sea mats



Membranipora membranacea

Learn more about *Membranipora*



Find out more: <http://www.marlin.ac.uk>



Co-funded by the Erasmus+ Programme of the European Union

